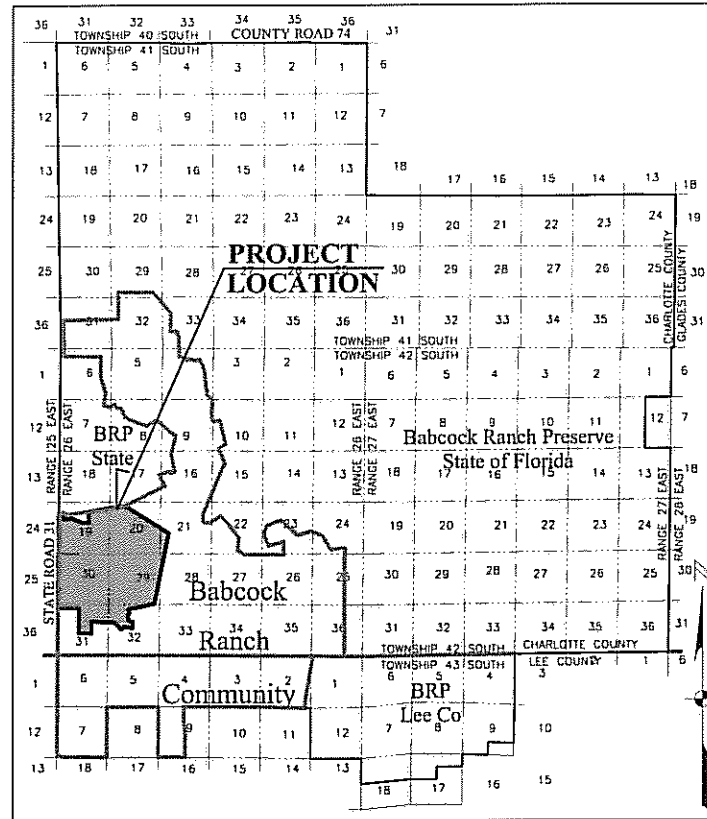


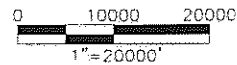
S:\20066201-050\Sketch - Increment 1 Boundary.dwg (Sheet 1) mlf2 Feb 02, 2009 - 10:41am

AIDA INCREMENT 1 BOUNDARY BABCOCK RANCH COMMUNITY

SECTIONS 19, 20, 21, 28, 29, 30, 31 AND 32
TOWNSHIP 42 SOUTH, RANGE 26 EAST
CHARLOTTE COUNTY, FLORIDA



LOCATION MAP



NOTES:

1. BEARINGS, DISTANCES AND AREAS ARE BASED ON GRID VALUES.
2. BEARING REFERENCE: STATE PLANE COORDINATES, FLORIDA WEST ZONE, NAD 83(99) WHEREIN WEST LINE OF THE NORTHWEST QUARTER (NW-1/4) OF SECTION 31, TOWNSHIP 42 SOUTH, RANGE 26 EAST BEARS SOUTH 00° 36' 46" WEST.
3. THIS SKETCH DOES NOT MAKE ANY REPRESENTATION AS TO ZONING OR DEVELOPMENT RESTRICTIONS ON THE SUBJECT PARCEL.
4. POC = POINT OF COMMENCEMENT.
5. POB = POINT OF BEGINNING.
6. DESC. = DESCRIPTION
7. AIDA = APPLICATION FOR INCREMENTAL DEVELOPMENT APPROVAL
8. BRP = BABCOCK RANCH PRESERVE
9. PARCEL CONTAINS 2,583.52 ACRES MORE OR LESS.
10. DESCRIPTION ATTACHED.

THIS IS NOT A SURVEY

MICHAEL W. NORMAN (FOR THE FIRM LB-642)
PROFESSIONAL SURVEYOR AND MAPPER
FLORIDA CERTIFICATE NO. 4500

DATE SIGNED: _____
NOT VALID WITHOUT THE SIGNATURE AND THE ORIGINAL RAISED SEAL OF A FLORIDA LICENSED SURVEYOR AND MAPPER.

**AIDA INCREMENT 1 BOUNDARY
BABCOCK RANCH COMMUNITY**
SECTIONS 19, 20, 21, 28, 29, 30, 31 AND 32
TOWNSHIP 42 SOUTH, RANGE 26 EAST
CHARLOTTE COUNTY, FLORIDA

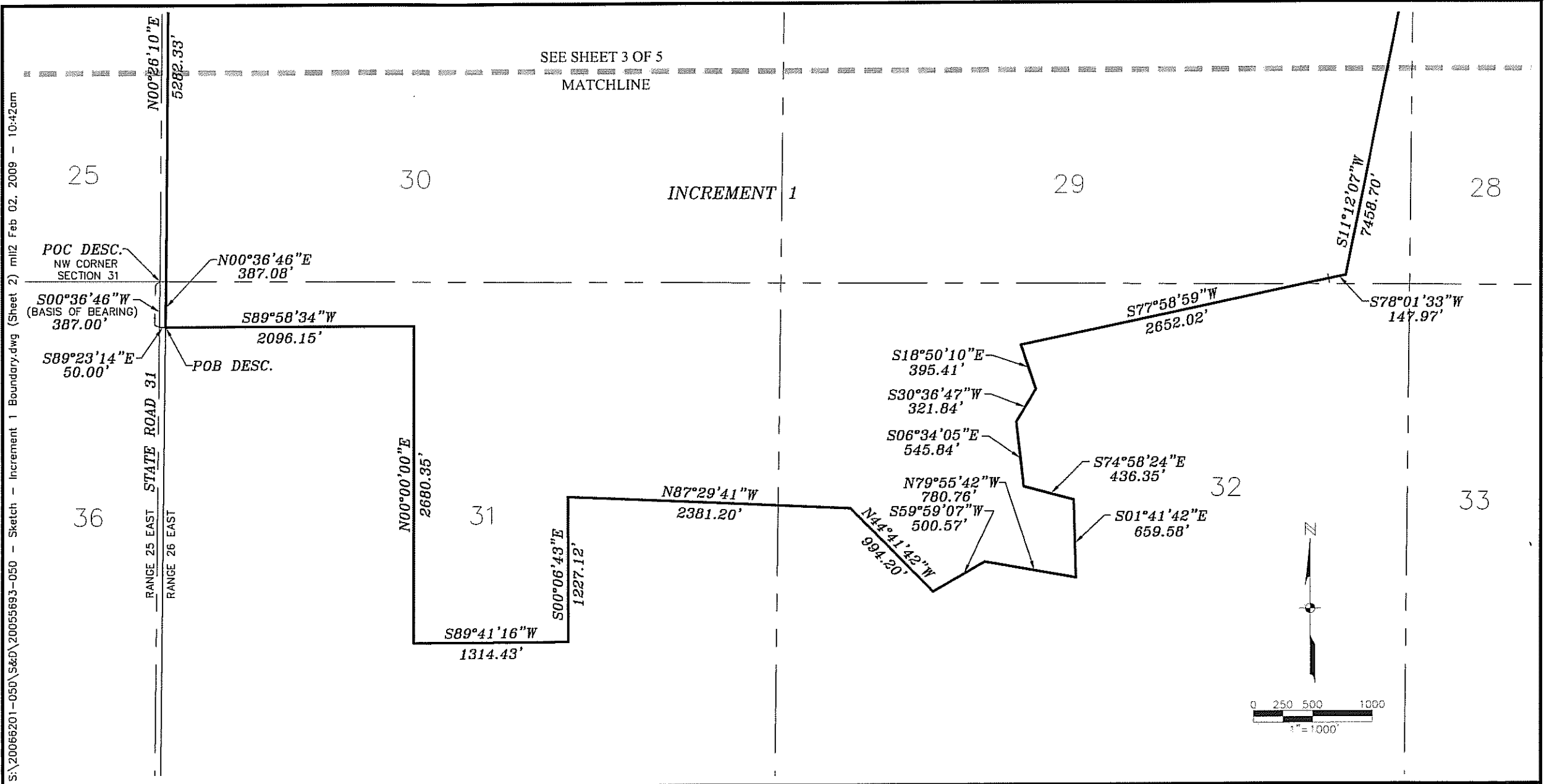


2122 JOHNSON STREET
P.O. BOX 1550
FORT MYERS, FLORIDA 33902-1550
PHONE (239) 334-0046
FAX (239) 334-3661
E.B. #642 & L.B. #642

**SKETCH TO ACCOMPANY
DESCRIPTION**

DATE	PROJECT NO.	FILE NO.	SCALE	SHEET
10/16/08	20055693-050	19-42-26	AS SHOWN	1 OF 5

S:\20066201-050\5&D\20055693-050 - Sketch - Increment 1 Boundary.dwg (Sheet 2) m12 Feb 02, 2009 - 10:42am



AIDA INCREMENT 1 BOUNDARY
BABCOCK RANCH COMMUNITY
SECTIONS 19, 20, 21, 28, 29, 30, 31 AND 32
TOWNSHIP 42 SOUTH, RANGE 26 EAST
CHARLOTTE COUNTY, FLORIDA

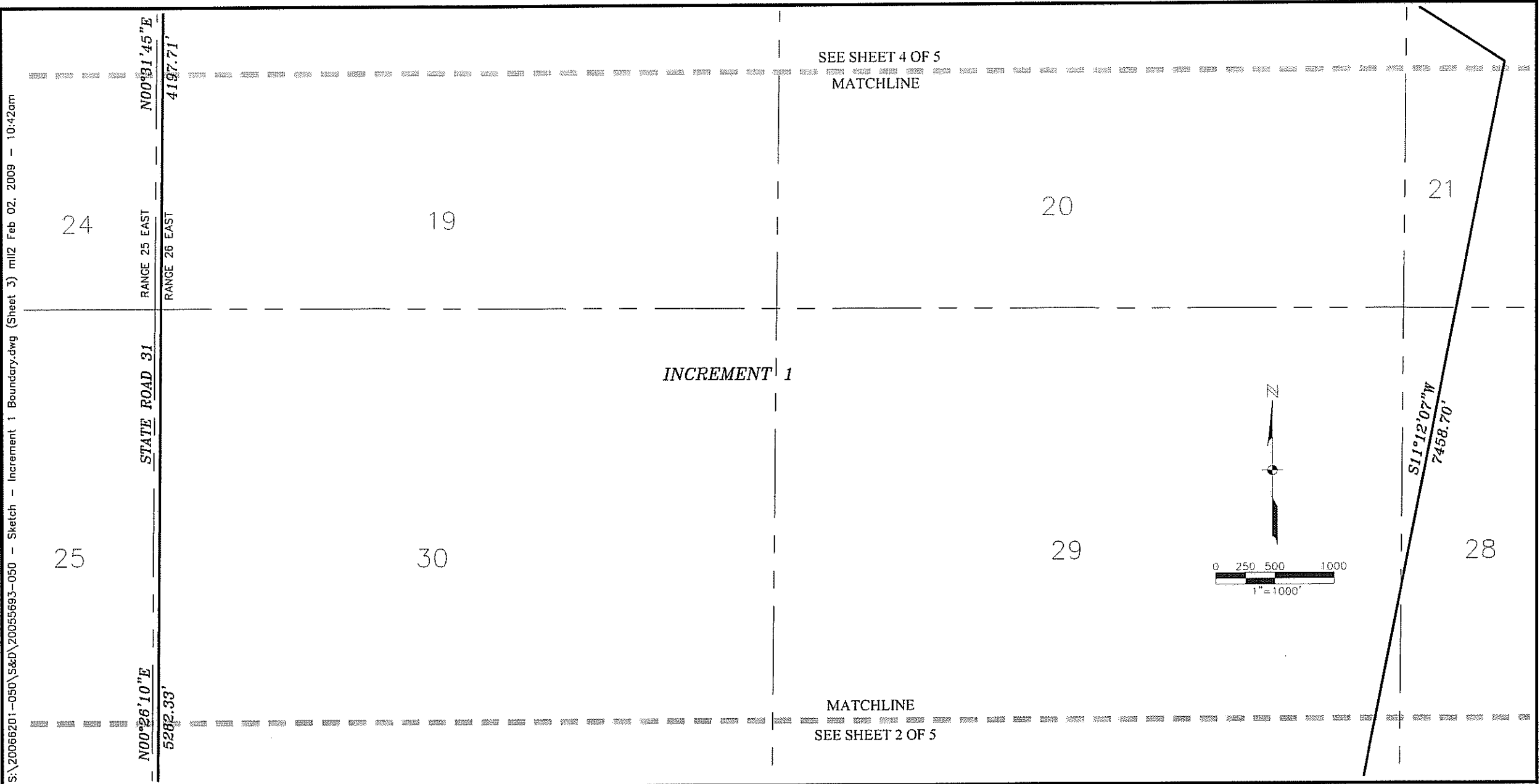
JOHNSON
ENGINEERING

2122 JOHNSON STREET
P.O. BOX 1550
FORT MYERS, FLORIDA 33902-1550
PHONE (239) 334-0046
FAX (239) 334-3661
E.B. #642 & L.B. #642

SKETCH TO ACCOMPANY
DESCRIPTION

DATE	PROJECT NO.	FILE NO.	SCALE	SHEET
10/16/08	20055693-050	19-42-26	1"=1000'	2 OF 5

S:\20066201-050\5&D\20055693-050 - Sketch - Increment 1 Boundary.dwg (Sheet 3) mll2 Feb 02, 2009 - 10:42am



AIDA INCREMENT 1 BOUNDARY
 BABCOCK RANCH COMMUNITY
 SECTIONS 19, 20, 21, 28, 29, 30, 31 AND 32
 TOWNSHIP 42 SOUTH, RANGE 26 EAST
 CHARLOTTE COUNTY, FLORIDA



2122 JOHNSON STREET
 P.O. BOX 1550
 FORT MYERS, FLORIDA 33902-1550
 PHONE (239) 334-0046
 FAX (239) 334-3661
 E.B. #642 & L.B. #642

SKETCH TO ACCOMPANY
 DESCRIPTION

DATE	PROJECT NO.	FILE NO.	SCALE	SHEET
10/16/08	20055693-050	19-42-26	1"=1000'	3 OF 5

S:\20066201-050\S&D\20055693-050 - Sketch - Increment 1 Boundary.dwg (Sheet 4) mll2 Feb 02, 2009 - 10:42am

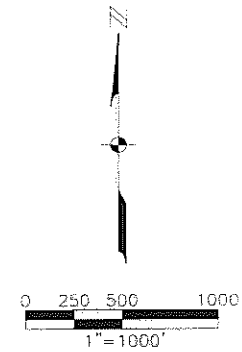
13

18

17

16

RANGE 25 EAST
RANGE 26 EAST



24

STATE ROAD 31
N00°31'45"E
4197.71'

S89°28'15"E
299.98'

S77°54'41"E
169.77'

S00°04'08"W
599.02'

N90°00'00"E
658.00'

N62°36'45"E
186.95'

S66°06'55"E
1147.74'

S89°39'57"E
711.01'

N01°03'27"W
1169.03'

N81°38'00"E
3109.39'

N82°12'01"E
711.48'

INCREMENT 1

20

21

S57°49'39"E
5335.90'

MATCHLINE
SEE SHEET 3 OF 5

AIDA INCREMENT 1 BOUNDARY
BABCOCK RANCH COMMUNITY
SECTIONS 19, 20, 21, 28, 29, 30, 31 AND 32
TOWNSHIP 42 SOUTH, RANGE 26 EAST
CHARLOTTE COUNTY, FLORIDA



2122 JOHNSON STREET
P.O. BOX 1550
FORT MYERS, FLORIDA 33902-1550
PHONE (239) 334-0046
FAX (239) 334-3661
E.B. #642 & L.B. #642

SKETCH TO ACCOMPANY
DESCRIPTION

DATE	PROJECT NO.	FILE NO.	SCALE	SHEET
10/16/08	20055693-050	19-42-26	1"=1000'	4 OF 5

S:\20066201-050\S&D\20055693-050 - Sketch - Increment 1 Boundary.dwg (Sheet 5) mliz Feb 02, 2009 - 10:42am

DESCRIPTION

AIDA INCREMENT 1 BOUNDARY
BABCOCK RANCH COMMUNITY
SECTIONS 19, 20, 21, 28, 29, 30, 31 AND 32
TOWNSHIP 42 SOUTH, RANGE 26 EAST
CHARLOTTE COUNTY, FLORIDA

A PARCEL OF LAND LYING IN SECTIONS 19, 20, 21, 28, 29, 30, 31 AND 32, TOWNSHIP 42 SOUTH, RANGE 26 EAST, CHARLOTTE COUNTY, FLORIDA, WHICH TRACT OR PARCEL IS DESCRIBED AS FOLLOWS:

COMMENCING AT THE NORTHWEST CORNER OF SAID SECTION 31 RUN SOUTH 00°36'46" WEST ALONG THE WEST LINE OF NORTHWEST QUARTER (NW-1/4) OF SAID SECTION 31 FOR 387.00 FEET; THENCE RUN SOUTH 89°23'14" EAST DEPARTING SAID LINE FOR 50.00 FEET TO AN INTERSECTION WITH THE EASTERLY RIGHT-OF-WAY LINE OF STATE ROAD 31 AND THE POINT OF BEGINNING.
FROM SAID POINT OF BEGINNING RUN THE FOLLOWING THREE (3) BEARINGS AND DISTANCES ALONG SAID RIGHT-OF-WAY LINE: NORTH 00°36'46" EAST FOR 387.08 FEET; NORTH 00°26'10" EAST FOR 5,282.33 FEET; NORTH 00°31'45" EAST FOR 4,197.71 FEET; THENCE RUN SOUTH 89°28'15" EAST DEPARTING SAID RIGHT-OF-WAY LINE FOR 299.98 FEET; THENCE RUN SOUTH 77°54'41" EAST FOR 169.77 FEET; THENCE RUN SOUTH 00°04'08" WEST FOR 599.02 FEET; THENCE RUN NORTH 90°00'00" EAST FOR 658.00 FEET; THENCE RUN NORTH 62°36'45" EAST FOR 186.95 FEET; THENCE RUN SOUTH 66°06'55" EAST FOR 1,147.74 FEET; THENCE RUN SOUTH 89°39'57" EAST FOR 711.01 FEET; THENCE RUN NORTH 01°03'27" WEST FOR 1,169.03 FEET; THENCE RUN NORTH 81°38'00" EAST FOR 3,109.39 FEET; THENCE RUN NORTH 82°12'01" EAST FOR 711.48 FEET; THENCE RUN SOUTH 57°49'39" EAST FOR 5,335.90 FEET; THENCE RUN SOUTH 11°12'07" WEST FOR 7,458.70 FEET; THENCE RUN SOUTH 78°01'33" WEST FOR 147.97 FEET; THENCE RUN SOUTH 77°58'59" WEST FOR 2,652.02 FEET; THENCE RUN SOUTH 18°50'10" EAST FOR 395.41 FEET; THENCE RUN SOUTH 30°36'47" WEST FOR 321.84 FEET; THENCE RUN SOUTH 06°34'05" EAST FOR 545.84 FEET; THENCE RUN SOUTH 74°58'24" EAST FOR 436.35 FEET; THENCE RUN SOUTH 01°41'42" EAST FOR 659.58 FEET; THENCE RUN NORTH 79°55'42" WEST FOR 780.76 FEET; THENCE RUN SOUTH 59°59'07" WEST FOR 500.57 FEET; THENCE RUN NORTH 44°41'42" WEST FOR 994.20 FEET; THENCE RUN NORTH 87°29'41" WEST FOR 2,381.20 FEET; THENCE RUN SOUTH 00°06'43" EAST FOR 1,227.12 FEET; THENCE RUN SOUTH 89°41'16" WEST FOR 1,314.43 FEET; THENCE RUN NORTH 00°00'00" EAST FOR 2,680.35 FEET; THENCE RUN SOUTH 89°58'34" WEST FOR 2,096.15 FEET TO THE POINT OF BEGINNING.
PARCEL CONTAINS 2,583.52 ACRES, MORE OR LESS.

BEARINGS, DISTANCES AND AREAS ARE BASED ON GRID VALUES. BEARING REFERENCE: STATE PLANE COORDINATES, FLORIDA WEST ZONE, NAD 83 (99) WHEREIN THE WEST LINE OF THE NORTHWEST QUARTER (NW-1/4) OF SECTION 31, TOWNSHIP 42 SOUTH, RANGE 26 EAST BEARS SOUTH 00°36'46" WEST.

AIDA INCREMENT 1 BOUNDARY
BABCOCK RANCH COMMUNITY
SECTIONS 19, 20, 21, 28, 29, 30, 31 AND 32
TOWNSHIP 42 SOUTH, RANGE 26 EAST
CHARLOTTE COUNTY, FLORIDA



2122 JOHNSON STREET
P.O. BOX 1550
FORT MYERS, FLORIDA 33902-1550
PHONE (239) 334-0046
FAX (239) 334-3661
E.B. #642 & L.B. #642

SKETCH TO ACCOMPANY
DESCRIPTION

DATE	PROJECT NO.	FILE NO.	SCALE	SHEET
10/16/08	20055693-050	19-42-26		5 OF 5